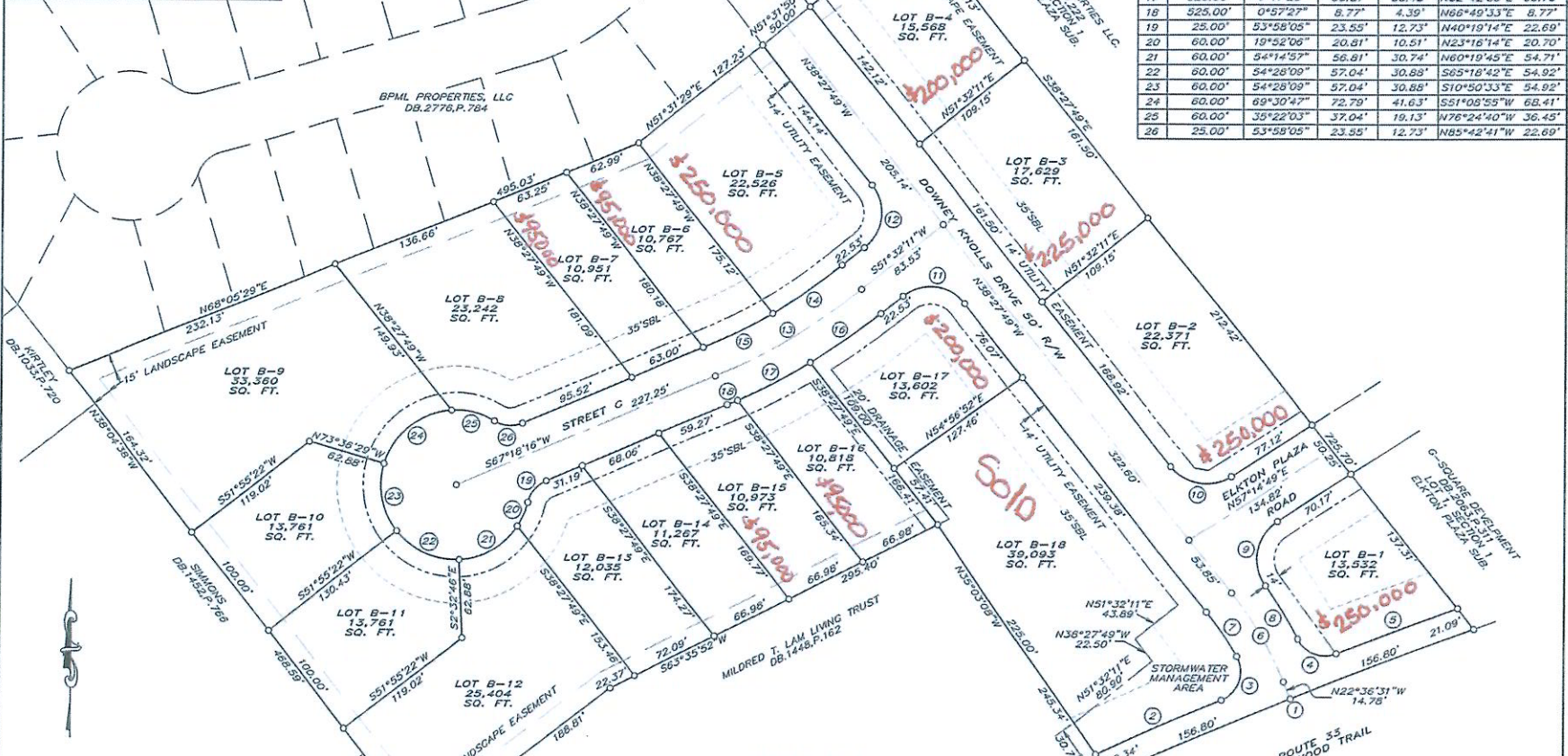


**CERTIFICATION**  
 I, JERRY L. SHEFFER, A LAND SURVEYOR, LICENSED BY THE COMMONWEALTH OF VIRGINIA, DO HEREBY CERTIFY THAT THIS PLAN AND SURVEY OF ELKTON PLAZA WEST WAS MADE BY ME AND THAT TITLE WAS OBTAINED BY BPML PROPERTIES, LLC, BY DEED RECORDED IN DB.2776.P.784, TM130-A-19

CURVE DATA					
NO.	R	Δ	ARC	TAN	CHORD
1	3874.72'	4°38'14"	313.60'	158.89'	S67°47'22"W 313.52'
2	3894.72'	1°38'40"	109.51'	54.76'	S66°13'18"W 109.51'
3	25.00'	96°34'55"	42.14'	28.05'	S18°44'11"W 37.33'
4	25.00'	84°02'43"	36.67'	22.53'	N69°28'47"W 33.47'
5	3894.72'	1°30'42"	102.76'	51.38'	S69°12'12"W 102.76'
6	300.00'	15°51'18"	83.02'	41.78'	N30°32'10"W 82.75'
7	275.00'	8°54'32"	42.76'	21.42'	S34°00'33"E 42.72'
8	325.00'	8°51'30"	50.25'	25.17'	N31°53'11"W 50.20'
9	36.00'	93°33'45"	58.79'	38.31'	N10°27'57"E 52.47'
10	36.00'	84°17'22"	52.96'	32.58'	N80°36'30"W 48.31'
11	36.00'	90°00'00"	56.55'	36.00'	S83°27'49"E 50.91'
12	36.00'	90°00'00"	56.55'	36.00'	S6°32'11"W 50.91'
13	500.00'	15°46'05"	137.60'	69.24'	S59°25'14"W 137.17'
14	475.00'	8°18'59"	68.95'	34.53'	S55°41'41"W 68.89'
15	475.00'	7°27'08"	61.78'	30.93'	S63°34'43"W 61.73'
16	525.00'	7°31'10"	68.90'	34.50'	N85°17'46"E 68.85'
17	525.00'	7°17'29"	66.81'	33.45'	N62°42'06"E 66.76'
18	525.00'	0°57'27"	8.77'	4.39'	N68°49'33"E 8.77'
19	25.00'	53°58'05"	23.55'	12.73'	N40°19'14"E 22.69'
20	60.00'	19°52'06"	20.81'	10.51'	N23°16'14"E 20.70'
21	60.00'	54°14'57"	56.81'	30.74'	N60°19'45"E 54.71'
22	60.00'	54°28'09"	57.04'	30.88'	S65°18'42"E 54.82'
23	60.00'	54°28'09"	57.04'	30.88'	S10°50'33"E 54.82'
24	60.00'	69°30'47"	72.79'	41.63'	S51°08'58"W 68.41'
25	60.00'	35°22'03"	37.04'	19.13'	N76°24'40"W 36.45'
26	25.00'	53°58'05"	23.55'	12.73'	N85°42'41"W 22.69'



**NOTES**  
 SUBDIVIDED PARCEL PORTION OF TM130-A-19

AREA WITHIN STREETS = 1.738 ACRES  
 AREA WITHIN LOTS = 2,362 ACRES  
 TOTAL SUBDIVIDED AREA = 9.100 ACRES

LOT B-1 THRU LOT B-18 ZONED B-1 GENERAL BUSINESS

NO TITLE REPORT FURNISHED. THIS PLAN MAY NOT SHOW ALL EASEMENTS AND ENCUMBRANCES.

RECORD PLAT  
**ELKTON PLAZA WEST**  
 STONEWALL DISTRICT, ROCKINGHAM COUNTY, VIRGINIA  
 SCALE 1" = 60'  
 FEBRUARY 12, 2009

HAMRICK ENGINEERING, P.C.  
 ENGINEERS - SURVEYORS - PLANNERS  
 156 LAUREL HILL ROAD, VERONA, VIRGINIA